

WOLF INDUSTRIES OPTIONS BOOK



REAL PEOPLE BUILDING EXTRAORDINARY HOMES

Being the Leader in Turnkey Solutions Done Right the First Time

EMPOWER.

Yourself.



Wolf Industries was designed with the idea of giving people more options; another way to find freedom and expression through simplicity.

Traditional stick-built homes are oversized and overpriced - while those houses that do feature a small footprint aren't built to last. Our prefab tiny homes and modular ADUs are affordable, scaleable and offer unsurpassed quality. A home is a serious purchase and we know that. From the decision-making process to the final handshake, we work hard to earn and maintain your trust. We won't stop until we've given you every reason to leave a 5-star review.

Starting Silver Package

Our Starting Silver Package includes everything you need except appliances. You can create an affordable, quality home for the base price. In addition, all of our homes come with an HVAC Mini-Split Unit that offer heat & A/C, and a Tankless Water Heater.

Gold Package

Our Gold Package allows you to add some extra wow factor to your little space. Want to upgrade your hardware to a popular choice of a black finish? Check. Higher quality cabinets? Check. Shiplap walls? Check. We've got you covered.

Platinum Package

Our Platinum Package allows for even further customizations. You can upgrade to premium white or gray shaker cabinets with a soft-close feature. Or, for those of you who love the log cabin look, you can add interior pine wall paneling. Make your home truly unique with this package.



Wolf FAQs:

Q: Is my property eligible to have a tiny home/ ADU added?

A: Great question! To get started, what is the address you are interested in placing a tiny home or ADU on? We'll review the zoning, setbacks and other requirements in your area and get back to you! <https://wolfind.com/quote/>

Q: Do your homes go on a foundation?

A: The majority of our homes are permitted and placed on a concrete stem-wall foundation - this is what makes our product different! We do however, offer the ability to place them on a trailer as a 'pre-fab home on wheels.'

Q: Are there lofts in your units?

A: For sure! Lofts are an excellent way to add additional storage space to a small home; though our lofts aren't rated for sleeping. They are offered in a variety of depths and dimensions in our B and C Models.

Q: What size homes do you offer? Can they be customized?

A: Our homes come in 8 floorplans, with sizes ranging from 300 to 1,232 square feet. They can be customized with options including finishes, roof styles, window and door placement, cabinets, appliances and more. Premium options like granite countertops are built in at no extra cost!

Q: If I choose the Gold package can I keep features from the Starting Package?

A: Absolutely. Upgrading your home just opens options to that level of materials/features. You're not limited to them.

Q: Are there additional service costs?

A: Yes. For an additional fee we offer Permitting and Delivery/Setup services. We are proud to offer a full turn-key solution to our customers. We can be your general contractor from start to finish!

WHAT IS INCLUDED IN A WOLF HOME?

The base price of our homes include great standard features that make the house move-in ready. Keep the basic offerings, or upgrade to customize your home. Then add on permitting and delivery & setup to create a turn-key stress-free project!

Visit the Process Page on our website to learn more.

SHELL

- Fiber Cement Lap Siding
- 30 yr Composite Shingles
- 6-panel Slab Front Door
- Turn Knob Door Hardware
- Gable or Shed Roof
- Double Pane Vinyl Windows
- Tankless Water Heater
- Mini-split for Heat & A/C
- 200 Amp Panel wired to house specifications
- ERV System



MODEL B - Gable Roof, Composite Shingles

The tankless water heater, condensor unit for the ductless mini-split, and electrical panel are all located on the outside of the home to save space.

INTERIOR FINISH

- Smooth Sheetrock Wall Finish
- LVP Flooring
- Standard MDF Window & Door Trim
- 6-panel Full-sized Interior Doors
- Ceiling Fan in Living/Kitchen Area
- Brushed Nickel Hardware
- Pine Tongue & Groove Ceilings in the Model B & C
- Lofts in the B & C

*lofts rated for storage only



MODEL B/C - Loft option above bed/bath for storage

KITCHEN

- Standard White Shaker Cabinets
- Brushed Nickel Hardware
- Group A Granite or Quartz Countertops
- Drop-in 1 or 2 Bowl Sink
- Brushed Nickel Pull Down Faucet
- Can Lighting
- Standard Kitchen Layout per Model
- Pendant Lighting depending on Kitchen Layout
- Prepped for Standard-sized Appliances



MODEL F - SINGLE WALL KITCHEN
(upgraded undermount sink)

BATH

- Standard Style Vanity (depending on model)
- Full-sized Tub/Shower Combo or Walk-in Shower in all models
- Hardware to match Kitchen

MODEL B/C/H/I/J BATHROOM
MODEL E/F/G BATHROOM



BUILDING CODE STANDARDS

- State Approved Gold Label from Labor & Industries Department
- Permit Ready
- Same Building Codes as all outside stick-built homes (IRC & IBC)
- LVL for added rigidity (Laminated Veneer Lumber)
- 2 x 6 Walls & 2 x 10 Floor Joists (2 x 8 in the B & C)
- PEX Plumbing
- Romex Wiring
- Fiberglass Insulation - R24 in walls, R30 in floors, R50 in ceiling (R38 in B & C)
- Spray foam around all utilities
- Exceeds Energy Code
- Permanent Foundation
- Wind Rating @ 145 mph, Category B

SHELL

It's what's on the inside that matters. But at Wolf, we believe the exterior details of your modular home need to be just as perfect. Choose from a variety of siding, windows, and porch options to get it just right for you.



MODEL B

BEACH HOUSE GETAWAY

FEATURED CHOICES

- A Composite Shingle Roofing**
Outer layer made of asphalt, bottom is fiberglass. Standard option
- B Board & Batten Siding**
Alternating wide boards and narrow wooden strips, called "battens." Upgrade option



C 1/3 Glass Door
For that little extra detail to make your front door stand out! Upgrade option

D Cedar Shake Gable
Rustic looking shingle. It has been circular sawn, replicating that saw mill cut look. Standard option in all single unit gables

E 10 x 10 Covered Porch
If you are looking for added outdoor space, this is a nice addition! Upgrade Option

ROOF STYLE



GABLE ROOF
Standard



TRADITIONAL OR MODERN?

A gable roof or shed roof design can be on any of our models, you just have to decide what style you are going for! The gable design offers the cedar shake accent siding and is more traditional.



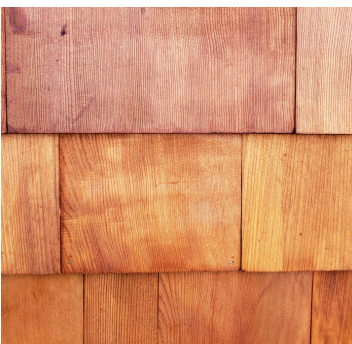
SHED ROOF
Standard



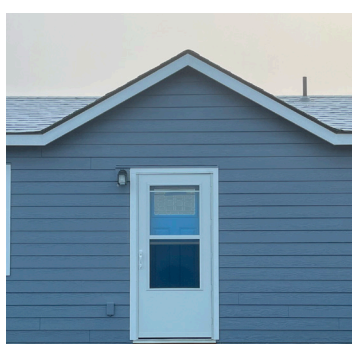
SHED ROOF

This is the more modern design and features upper transom windows for added light. It is also 10' tall on the high side vs. 9' tall in the gable (for Models B - H). The shed roof can be upgraded to metal as well. (Transom windows not on the B/C)

GABLE ACCENT SIDING



CEDAR SHAKE
Standard gable material in B - H
*as pictured above on Gable Roof
Upgrade gable material in I/J



LAP SIDING
*carried up to gable
Upgrade gable material in all models

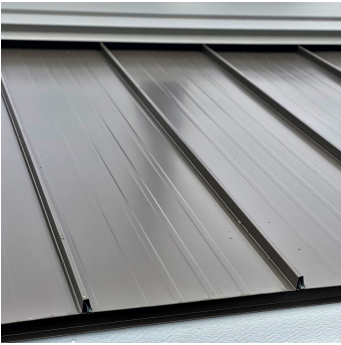


BOARD & BATTEN SIDING
*carried up to gable.
Upgrade gable material in B-H
Standard gable material in I/J

ROOFING



**COMPOSITE OR
ASPHALT SHINGLES**
Standard



**STANDING
SEAM METAL**
Upgrade, 26 gauge



HOME HIGHLIGHT - MODEL E



TIPS FROM PREVIOUS CUSTOMERS.

Definitely go for the metal roof! It lasts so much longer and comes in a variety of colors. Easy to keep clean too!

FRONT DOOR STYLE



SLAB - NO GLAZING
Standard 6-panel



1/3 GLASS
Upgrade



FULL GLASS
Upgrade



CRAFTSMAN
Upgrade



FRENCH DOOR
Upgrade/Add-on option
*Requires covered porch



SLIDING DOOR
Add-on option

EXTERIOR LIGHTING



CARRIAGE LIGHT
Standard at all exterior doors

HARDWARE STYLE -
INTERIOR DOOR HANDLES



KNOB
Standard Brushed Nickel



LEVER
Upgrade



MODERN
Upgrade



KNOB
Black Finish Upgrade



LEVER
Upgrade



MODERN
Upgrade

HARDWARE STYLE - FRONT DOOR HANDLES



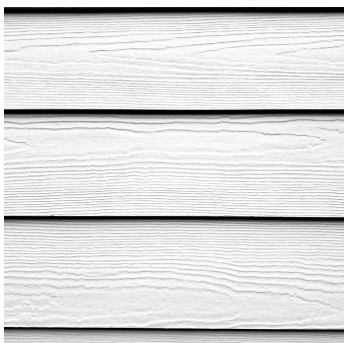
ELECTRIC LOCK
Standard - Brushed Nickel, Knob



ELECTRIC LOCK
Upgrade - Black Finish, Modern Lever

SHELL	KITCHEN	APPLIANCES	BATHROOM	UPGRADES	MISC
-------	---------	------------	----------	----------	------

SIDING



LAP SIDING

Standard



MODEL E -

Lap siding, gable roof upgraded to metal, upgraded 10 x 10 covered porch.



BOARD & BATTEN

Upgrade option



MODEL E -

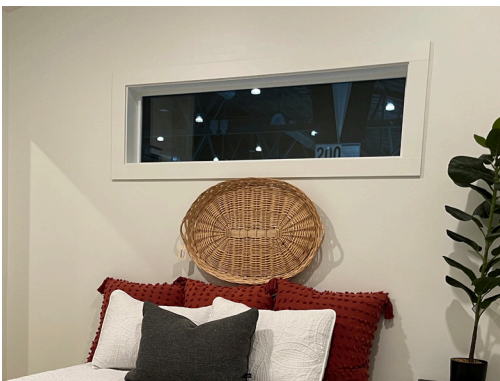
Board & Batt siding, shed roof, upgraded 1/3 glass front door.

PAINT OPTIONS

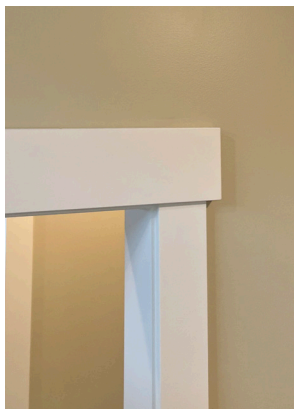
Standard you can choose 3 exterior paint colors for your home - body, trim, and door color. Interior you choose 1 color for the walls, trim and doors, but you can upgrade to the trim and doors being a different color than the walls.



3 EXTERIOR COLORS
Standard, Any colors you want!



WALLS, TRIM, DOORS SAME COLOR
Standard



TRIM/DOORS 2ND COLOR FROM WALL
Upgrade

SHELL

KITCHEN

APPLIANCES

BATHROOM

UPGRADES

MISC

INTERIOR FINISH

FEATURED CHOICES

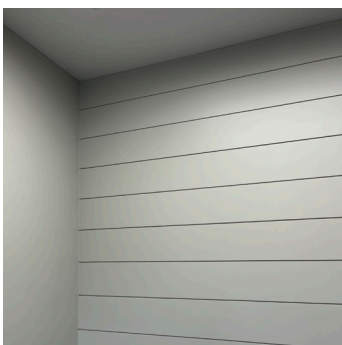
A White Shiplap on Walls
Modern farmhouse look

B Pine Tongue & Groove Ceiling
Feels like a cabin and very natural

C Medium Color LVP Floor
High quality flooring that looks like hardwood, but a fraction of the price



ACCENT WALLS OR CEILING



SHIPLAP FIR
Upgrade



TONGUE & GROOVE PINE
Upgrade

ACCENT/TRIM FINISHES

- Unfinished
- Paint
- Clear Coat
- Stain & Clear Coat
- Semi-gloss Paint

PRICE DEPENDS ON FINISH TYPE

LUXURY VINYL PLANK FLOORING - LVP

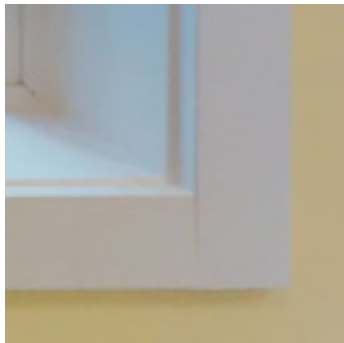


DORY VAUGHN HERMES KONA LANGSTON RACINE

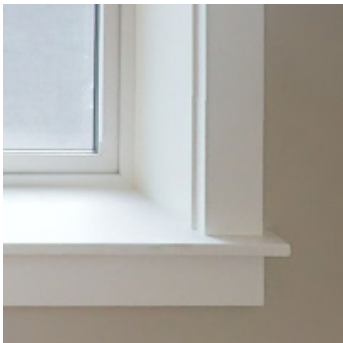
We have 6 colors tones to choose from, ranging from dark to light brown and gray. Although we will always offer a range of flooring colors, the specific color options will change from time to time.

* LVP is the Standard flooring and the only flooring option we offer.

TRIM STYLE - INTERIOR WINDOWS & DOORS



STANDARD TRIM
STYLE (MDF)

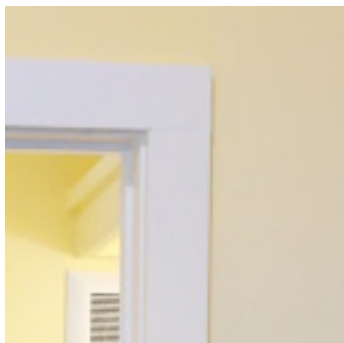


DETAILED TRIM
STYLE (MDF)
Upgrade

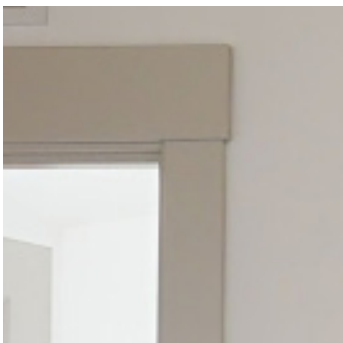


DETAILED TRIM

TRIM MATERIAL - INTERIOR WINDOWS & DOORS



MDF STANDARD
TRIM MATERIAL



MDF DETAILED
TRIM MATERIAL
Upgraded



PINE - Unfished
Upgrade

SHELL

KITCHEN

APPLIANCES

BATHROOM

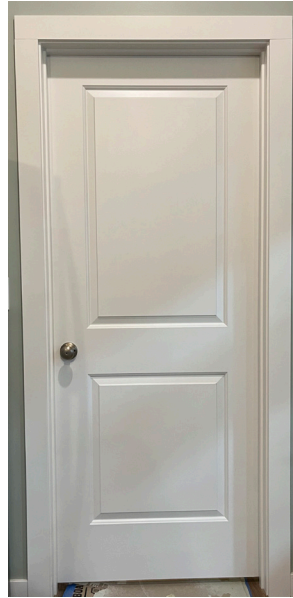
UPGRADES

MISC

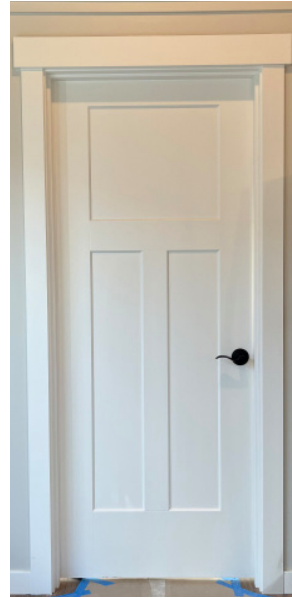
INTERIOR DOORS



6-PANEL
Standard



**2-PANEL
SQUARE TOP**
Upgrade



**3-PANEL
CRAFTSMEN**
Upgrade



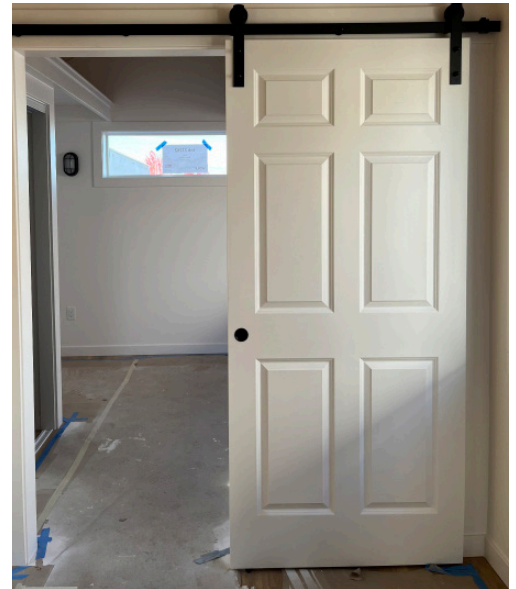
**SINGLE-PANEL
CRAFTSMEN**
Upgrade



6-PANEL PINE
Pine solid core only
comes in 6-panel
Standard



PINE BARN DOOR
Made and designed by Wolf for your
house!
Upgrade



PANELED BARN DOOR
Works great to cover the washer and dryer.
Style will match your other interior doors.
Upgrade

CEILING & VENTING



CEILING FINISH - SHEETROCK

Standard Option E, F, G, H, I, & J
Upgrade for B/C

CEILING FAN - STANDARD OPTION

All of our homes have a ceiling fan in the living room/ kitchen area, to help circulate air flow from your mini-split.



CEILING FINISH - PINE TONGUE & GROOVE

Standard Ceiling Finish in B & C
Upgrade for E, F, G, H, I, & J



DEHUMIDIFIER SYSTEM

Upgrade for all models.
Ventilation system used to remove moisture from the air to help reduce and maintain humidity levels. Good for smaller spaces that have a lower air exchange rate.

CEILING BEAM - MODELS I & J

Our standard finish for the center beam is wrapping in wood, either fir or pine, to offer a nice accent piece ad conversation started. Covering it with drywall would be the upgrade.



FIR WRAPPED ACCENT

Standard
*Upgrade Stain



PINE WRAPPED ACCENT

Standard
*Upgrade Pine T&G Ceiling

SHELL	KITCHEN	APPLIANCES	BATHROOM	UPGRADES	MISC
-------	---------	------------	----------	----------	------

KITCHEN

Kitchens have always been the focal point of every home, and in tiny homes especially, they take up a lot of space. This is where you can make a statement with appliances and cabinets. Some customers have even supplied a large chandelier to be installed to give it an extra wow factor.



MODEL C

A Granite/Quartz Countertops
High quality Granite or Quartz countertops are standard on all of our Models.

B Cabinets
Premium quality Gray Shaker style cabinets with soft-close feature.



C Undermount Single-Bowl Sink
Sleek design that doesn't get water all over the counter.

D Under Cabinet Lights
See Technology page 27 for more details.

CABINETS



WHITE SHAKER

Standard

Single Wall Layout

**Whirlpool Appliance Package offered by Wolf*



HICKORY

Galley Layout



PREMIUM WHITE

Island Layout



PREMIUM GRAY

L-shaped Layout

Available in Light & Dark Gray

**Customer added backsplash after delivery*

KITCHEN SINKS



DROP-IN 2 BOWL
Standard



DROP-IN 1 BOWL
Standard



**UNDERMOUNT
2 BOWL**
Upgrade



**UNDERMOUNT
1 BOWL**
Upgrade

We have a variety of kitchen designs available in our E, F, G, I, and J models, each with their own cabinet layout.

We offer:

- Single Wall
- Galley
- L-shaped
- Island

KITCHEN FAUCETS



PULL DOWN
Brushed Nickel
Standard



PULL DOWN
Black Finish
Upgrade

SHELL

KITCHEN

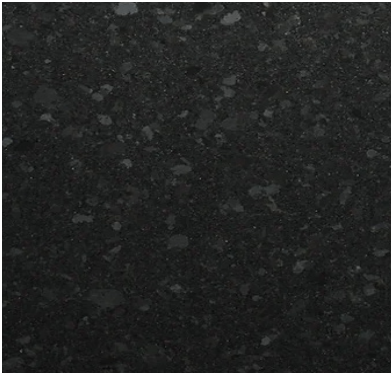
APPLIANCES

BATHROOM

UPGRADES

MISC

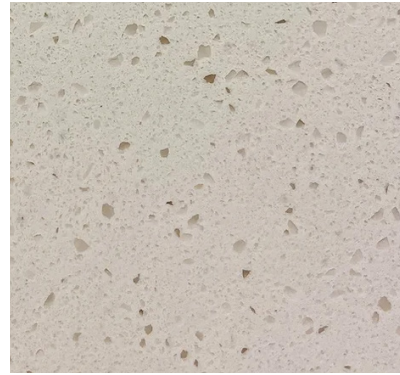
SILVER PACKAGE STANDARD COUNTERTOPS (GROUP A) Standard



**SILVER PEARL
HONED GRANITE**



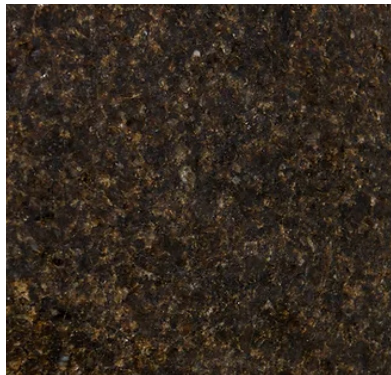
**BASALTINO
GREY QUARTZ**



**ALASKA
QUARTZ**



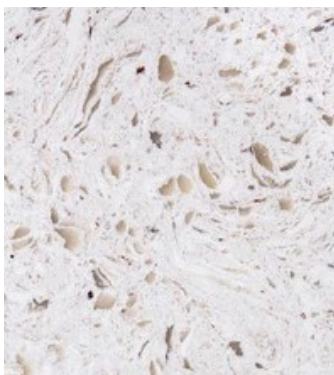
**MERCURY
QUARTZ**



**VERDE UBATUBA
GRANITE**

Supply and product colors vary throughout the year. We do our best to order exactly what you want, but we can't guarantee that it will always be available.

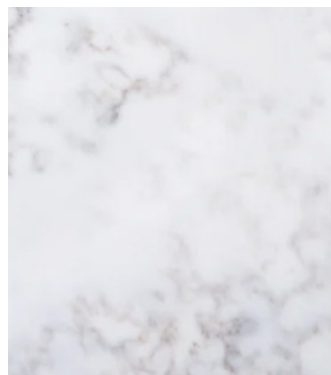
GOLD/PLATINUM PACKAGE PREMIUM COUNTERTOPS (GROUP B) Upgrade



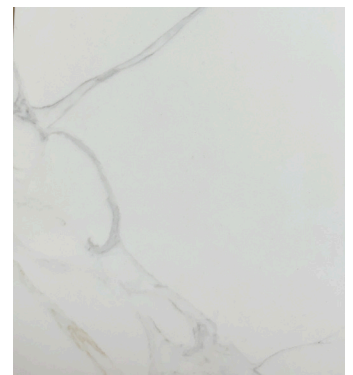
**MALACHITE
WHITE
QUARTZ**



PAZ



**NEBULA WHITE
QUARTZ**

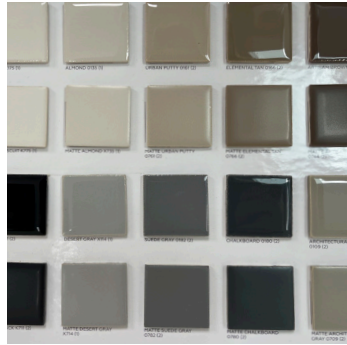


**ANGEL WHITE
QUARTZ**

BACKSPLASH (GOLD OPTION) Upgrade



WHITE SUBWAY TILE



BROWN OR GRAY RECTANGLE



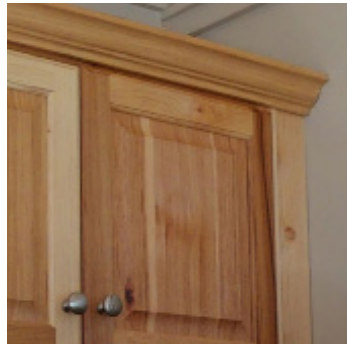
6" BACKSPLASH TO MATCH COUNTER

You can choose 6" tall tile, Full-height tile to the bottom of the upper cabinets, or 6" granite or quartz to match the countertops. Grout can be white, bone, or gray

CROWN MOLDING - CABINET UPGRADE Upgrade



WITHOUT CROWN MOLDING



WITH CROWN MOLDING



WITH CROWN MOLDING

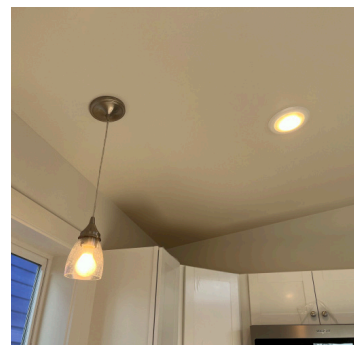
KITCHEN LIGHTING



CAN LIGHTS



PENDANT



EXAMPLE - Ceiling with overhead can light and pendant light.

SHELL

KITCHEN

APPLIANCES

BATHROOM

UPGRADES

MISC

APPLIANCES

We offer appliances at an additional costs to the house price. You can purchase the entire appliance package or individual appliances. You can choose to install your own appliances after delivery and we simply prep the space. You can also choose not to have an appliance and purchase extra cabinets. So many options!



MODEL C

A Stainless Dishwasher
Stainless finish gives a dishwasher a clean, new feel

B Stainless Oven w/ Convection
Convection allows for faster cook times and evenly circulates heat



C Stainless Microhood
Microwave with built in hood fan

D Stainless Refrigerator
Stainless finish gives your basic fridge an upgrade

E Customer Installed Backsplash
This customer added their own tile of choice after delivery.

REFRIGERATOR



STAINLESS TOP FREEZER

- Whirlpool 29.75"W x 65.375"H x 33.5"D Stainless 18.2-cu ft Top-Freezer Refrigerator
- Flexi-slide deli storage bin to conveniently make room for tall items
- Frameless wall-to-wall glass shelves - enjoy a polished look and easy-access cleaning with shelves that extend the full width Quiet Cooling technology
- Adjustable Wire Freezer Shelf
- Electronic Temperature Controls - to regulate both fresh food and freezer sections
- Optional interior Ice Maker
- Reversible Handles

DISHWASHER



STAINLESS DISHWASHER

- Whirlpool Front Control 24" Stainless Steel Built-In Dishwasher x 34.5"H x 24.5"D
- ENERGY STAR® Certified
- In-door silverware basket that frees up rack space.
- Normal and Heavy cycle options with sensor wash
- Pots/Pans Cycle
- High-temp settings
- Heated dry option - for optimal drying results
- 1 Hour Quick Wash - enjoy a quality clean when you're short on time
- Child Safety Locks

RANGE



**STAINLESS RANGE
W/CONVECTION - GAS**

- Whirlpool 30" Stainless Steel 5 Burner 5.1-cu ft capacity oven with edge-to-edge cooktop to give you extra room
- 29.88"W x 46.25"H x 27.2"D
- 5 Cooktop Elements, including SPEEDHEAT Burners for quick sear and boil.
- 5,000-BTU AccuSimmer
- 8,000-BTU middle burner
- 2 oven racks with 6 possible positions adjust to suit your baking needs
- Included Cast-iron grates and griddle are dishwasher safe
- Full-width broiler

- Don't have natural gas or propane capabilities? Ask about switching to an electric range.

HOOD FAN



STAINLESS MICROHOOD
(Microwave/Hood Combo) Standard Option

- Whirlpool 1.7-cu ft 1000-watt Over-the-Range Stainless Steel Microhood.
- 29 15/16"W x 17 1/8"H x 17 9/16"D
- 12" dishwasher safe turntable to ensure even cooking
- 6 convenience cooking controls to make meal prep easy
- 2 vent speeds
- Adjustable cooktop lighting
- Auto and timed defrost features
- Fingerprint Resistant Stainless Steel
- Add 30-seconds option to quickly adjust cook time.



RANGE HOOD ONLY
Alternative Option - No microwave

SHELL

KITCHEN

APPLIANCES

BATHROOM

UPGRADES

MISC

WASHER & DRYER



HIGH-END STACKED FRONTLOAD - ELECTRIC

HIGH-END WASHER

- Whirlpool Load and Go 4.5-cu ft, 32" deep Stackable Front-Load Washer ENERGY STAR®
- Load and Go dispenser holds enough laundry soap for 20 loads, so you can skip adding detergent to every load
- Large capacity can help you take on large loads
- Sanitize items like towels using detergent and an oxi additive
- Steam clean option
- Quick Wash cycle
- Presoak option

HIGH-END DRYER

- Whirlpool 7.4-cu ft Stackable Electric Dryer ENERGY STAR®
- Advanced Moisture Sensing - 3 sensors track moisture and temp, adapting drying times to end the cycle at just the right time
- EcoBoost Option - saves energy by using less heat and an extended cycle time.
- Quick Dry
- Sanitize Cycle - provides care for your clothes in the dryer while eliminating 99.9% of common household bacteria
- Quad baffles - 4 baffles tumble clothes in a randomized pattern, to help increase effectiveness of the dryer, allowing items to open up freely

Is the stackable Washer & Dryer too tall? Ask about a Unitized Laundry Center with button controls in the middle for easier reach.

FINANCING OPTIONS

Current Lenders for Wolf Industries

	House Only	HELOC	Home & Land (Conventional)	USDA	VA	Refi	FHA	Location Specific
Cornerstone		Y	Y	Y	Y	Y		
Craft3 – ADU Loans								Oregon
Liberty	Y							

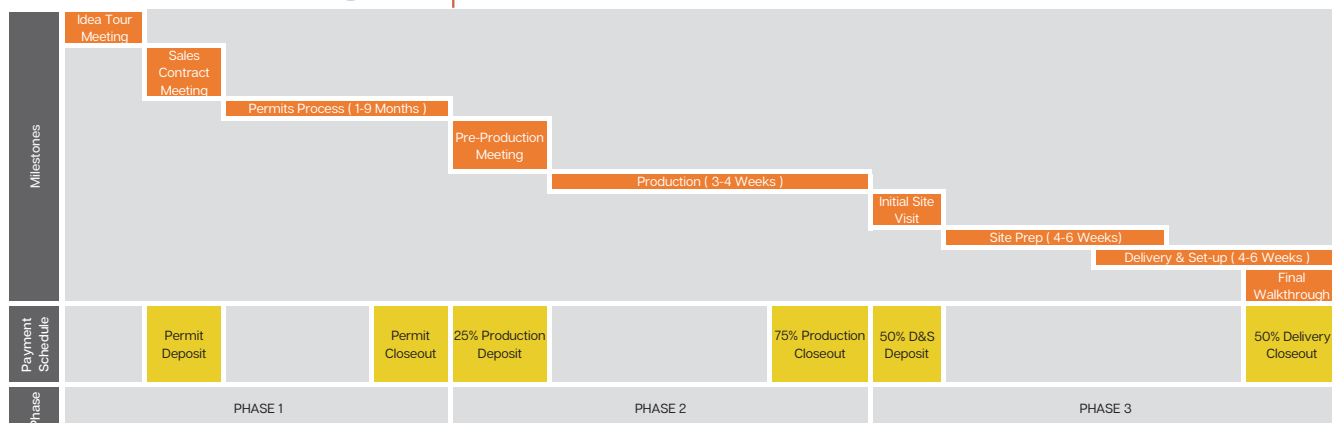
- Cornerstone Home Lending - Dan Huegel, Sr. Loan Officer | NMLS 583035
 - 360-606-6744 cell | 360-719-1809 office
 - dhuegel@houseloan.com
 - www.houseloan.com/danhuegel/
- Craft3 – Richard Pichler, Sr. Consumer Lender | NMLS 368891
 - 206-456-4459
 - rpichler@craft3.org
 - *Oregon Only – Multnomah, Clackamas, Washington Co.
- Liberty – Carolyn Smith, Bank Loan Manager
 - 423-802-4650
 - *Modular home-only loans up to \$125,000 max, trailer only

PAYMENT STRUCTURE

Our payment process is straight forward - 6 payments due along your project timeline. There is a deposit to start a phase and closeout payment when the phase has been completed. Can't get easier than that!

*If you are working with one of our lenders, we will request draws as invoicing occurs.

WOLF INDUSTRIES Customer Flow Chart



SHELL

KITCHEN

APPLIANCES

BATHROOM

UPGRADES

MISC

BATHROOM

Living in a tiny home does not mean you have to give up your bathroom space! Why not stay comfortable with a full size shower/tub and a vanity cabinet that has storage? Here at Wolf, we want you to enjoy every part of your home.



A Standard Vanity (E, F, G)
Give your bathroom a clean, sleek, modern feel with this vanity.
Standard

B Brushed Nickel Hardware
This faucet looks so sharp and modern in the bathroom.
Standard

C Walk-in Shower
You can choose either a walk-in shower or tub/shower combo.
Standard

BATHROOM VANITIES



STANDARD STYLE
(MODEL B, C, H) (I, J MASTER)



UPGRADED STYLE
(MODEL B, C, H) (I, J MASTER)



STANDARD STYLE
(MODEL E, F, G)
(I,J 2ND BATH)



UPGRADED STYLE
(MODEL E, F, G)
(I,J 2ND BATH)

SHELL

KITCHEN

APPLIANCES

BATHROOM

UPGRADES

MISC

SHOWERS & TUBS



TUB/SHOWER COMBO

Standard



WALK-IN SHOWER

Standard

*6" step-up up into shower



WALK-IN SHOWER WITH DOORS

ADDED Glass Shower Door



TILE SHOWER W/ACRYLIC BASE

Standard

*3.5" step-up up into shower, 4.5" step-up with doors

A

ADA compliant grab bars are optional on any shower/tub configuration.

TECHNOLOGY & ELECTRICAL UPGRADES

Want to make your space ready for the modern world? We offer a few options for technology and electrical upgrades.



USB OUTLET



HDMI TV PLUG



HDMI TV PLUG

EXTREME COLD WEATHER PACKAGE

Our homes follow IRC/IBC standards, but sometimes we place a home in an extreme weather area which requires additional protection against the elements. Our extreme cold weather package adds a cold weather HVAC rated to -15°, an additional wall heater by front door, and a tankless gas water heater installed indoors. You can add snowguards to a metal roof as well.



**INDOOR TANKLESS
WATER HEATER**



**INDOOR TANKED
ELECTRIC WATER
HEATER**
Upgrade

SHELL

KITCHEN

APPLIANCES

BATHROOM

UPGRADES

MISC

DECKS, PORCHES, & RAMPS

We offer 4 different deck sizes -

- 3' x 3' standard
- 3' x 6'
- 8' x 12' deck and/or Shed covered porch
- 10' x 10' deck and/or Gable covered porch

You choose which one you add to your house!



3' X 3' DECK



3' X 3' DECK W/RAMP



3' X 3' DECK W/RAILING

3' X 6' DECK



8' X 12' DECK



8' X 12' DECK & RAILING



8' X 12' SHED COVERED PORCH



10' X 10' GABLE COVERED PORCH

Want a bigger deck than what we offer? We can add a deck ledger board to any side of the home. Then, a deck company can install the deck of your dreams after we hand you the keys, without having to cut into your siding.



DECK LEDGER EXAMPLE

SHELL	KITCHEN	APPLIANCES	BATHROOM	UPGRADES	MISC
-------	---------	------------	----------	----------	------

All of the following items are available as “one-off” upgrades or add-ons. Prices can be determined during your pricing and contract meeting.

- UNDER CABINET LIGHTING
- OVER CABINET LIGHTING
- LAMP SWITCH BY BED
- SCONCES WITH SWITCH BY BED
- ADD DISK CAN LIGHTS TO OVERHANGS ON MODEL E/F/G/H
- CAT 6 ETHERNET CABLE
- PVC TO CRAWL FROM TV BOX
- 5.1 SURROUND, PRE-WIRE ONLY
- ADD CEILING FAN (1 standard in Living/Kitchen)
- ADD DISK CAN LIGHTS
- ADD FLOOD LIGHTS
- ADD DEDICATED 20AMP CIRCUIT
- ADD HOT TUB CIRCUIT
- ADD OUTLET/USB/HDMI LOCATION
- ADD DIMMER OR TIMER SWITCH
- SWITCHED SOFFIT PLUG
- REMOVE BEDROOM WALL
- ICE MAKER KIT
- WELL HOUSE

- ADD WINDOWS
- PORCH ROOF
- CUSTOM STAIRS OR RAMP
- ADD FLOOD LIGHT WITH SWITCH
- EXTERIOR HOSE BIB (Cold Only or/and Hot/Cold option)
- GRAB BARS
- GARBAGE DISPOSAL
- ADD EXTERIOR DOOR (Single or French)
- ADD EXTERIOR SLIDING DOOR
- ADD STORM DOOR (Screen Door)
- ADD EXTERIOR OUTLET (1 standard included)
- ADDRESS SIGNAGE
- REFRIGERATOR WATER SUPPLY
- LIGHTING DIMMER
- REMOVE CLOSET IN BEDROOM
- MIRROR IMAGE FLOOR PLAN OF ANY MODEL
- DEHUMIDIFIER (PG 11)
- ADD ADDITIONAL WALL HEATER
- CHANGE TO UNITIZED LAUNDRY CENTER

ADD-ON & UPGRADES EXAMPLES



STORM DOOR



HOT/COLD
HOSE BIB



GRAB BARS



EXTERIOR SOFFIT LIGHTS
Minimum of 3 required



BEDSIDE SCONCES
Edison, Gooseneck, Industrial



UNITIZED
LAUNDRY



WELL PUMP
HOUSE

SHELL

KITCHEN

APPLIANCES

BATHROOM

TECHNOLOGY

MISC



**WOLF
INDUSTRIES
THREE CORE
VALUES:**

Solution Seeking
Own It
Positive Attitude

SHELL

KITCHEN

APPLIANCES

BATHROOM

TECHNOLOGY

MISC